



Research Orientation: Clinical and Translational Science Institute Community Health Equity Research Institute

September 11, 2024

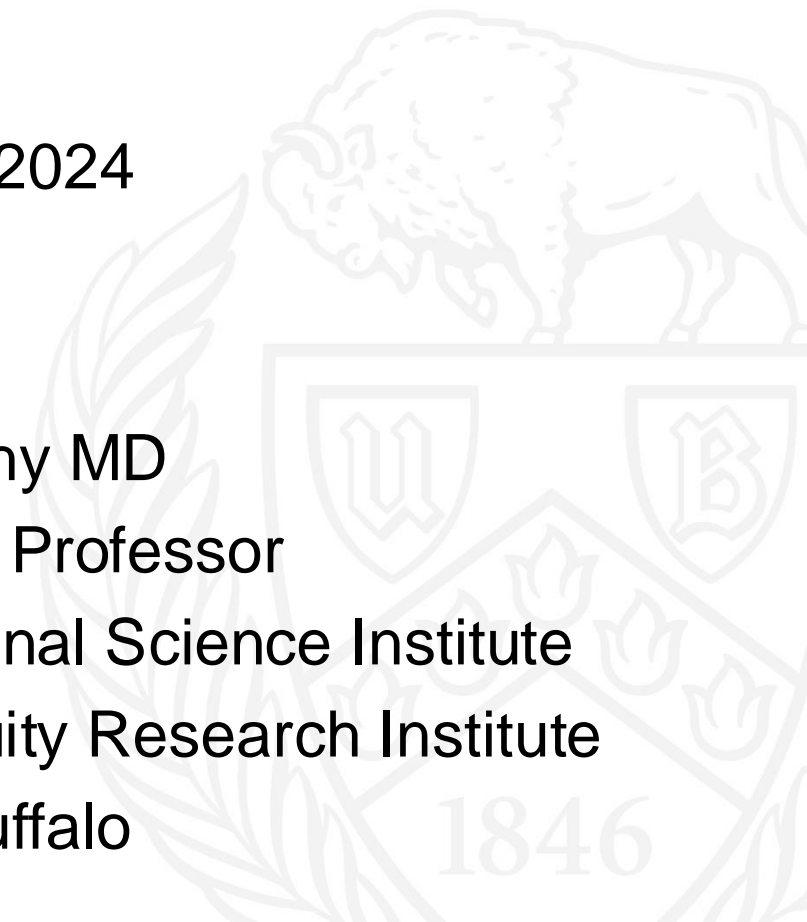
Timothy F. Murphy MD

SUNY Distinguished Professor

Director, Clinical and Translational Science Institute

Director, Community Health Equity Research Institute

University at Buffalo



 University at Buffalo
Clinical and Translational
Science Institute

The CTSI includes:

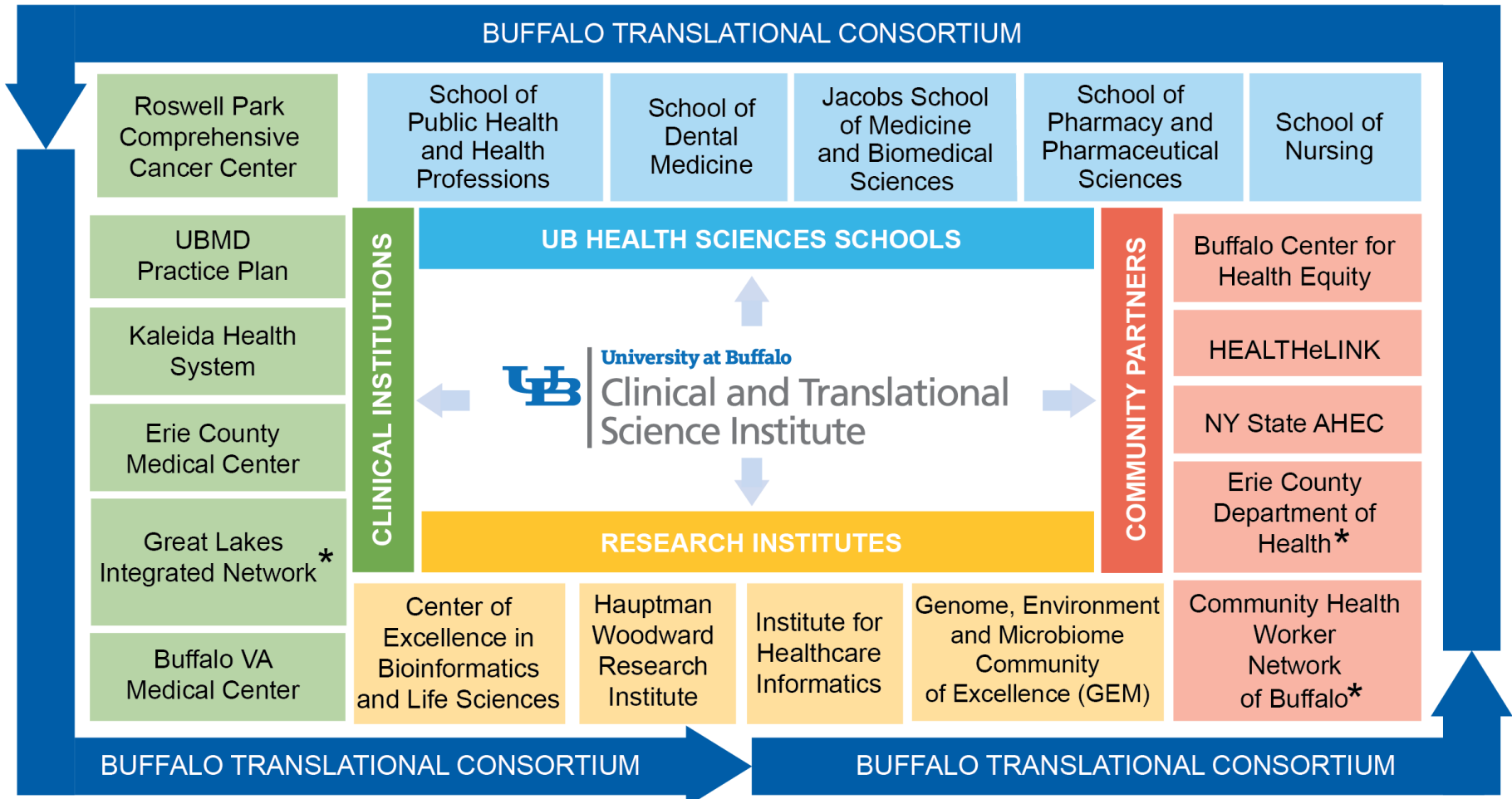
- Clinical and Translational Research Center (building)
- Clinical and Translational Science Award (grant)
- Buffalo Translational Consortium (partnership)

Advancing research discoveries to improve health for all



<http://www.buffalo.edu/ctsi>





*New in 2023



Vision

Advance and accelerate research to improve the health of our community and reduce health disparities in our community and the nation.

<http://www.buffalo.edu/ctsi>

1846



FOR OUR COMMUNITY



[Explore Resources](#)

FOR RESEARCHERS



[Explore Opportunities](#)



Clinical and Translational Science Institute Cores



BIostatistics, EPIdemiology, and RESEARCH DESIGN (BERD)



CENTER FOR BIOMEDICAL IMAGING



CLINICAL RESEARCH FACILITATION



COMMUNITY ENGAGEMENT



INFORMATICS



INSTITUTE FOR HEALTHCARE INFORMATICS



MENTORED CAREER DEVELOPMENT AWARDS PROGRAM



RECRUITMENT AND SPECIAL POPULATIONS



TRANSLATIONAL PILOT STUDIES



WORKFORCE DEVELOPMENT



FOR OUR COMMUNITY



 [Explore Resources](#)

FOR RESEARCHERS



 [Explore Opportunities](#)



FOR OUR COMMUNITY



Explore Resources

- [Join Buffalo Research Registry](#)
- [Self-search research studies](#)
- [Register for national studies](#) 
- [Newsletter for the community](#)
- [Sofia Learns About Research](#)

FOR RESEARCHERS



Explore Opportunities

- [Recruitment Resources Toolkit](#)
- [Recruitment Consultations](#)
- [Clinical Trials at UB](#)
- [Research Flow at UB](#)
- [Clinical Research Facilitation](#)
- [Laboratory Facilities](#)



Recruitment Resources Toolkit

There are a wide variety of tools available to University at Buffalo researchers and Buffalo Translational Consortium partners that can enhance recruitment for your research study. From feasibility through follow-up, these tools can help bolster recruitment and retention.

RESOURCES FOR RESEARCHERS AND STUDY TEAMS

This toolkit serves as a guide for researchers who want to enhance recruitment for their research studies. Depending on the study, multiple tools may be used. If you have any questions about a tool, please contact ctsiresearch@buffalo.edu.

Study Listings

Participant Databases

Consultations

Resources

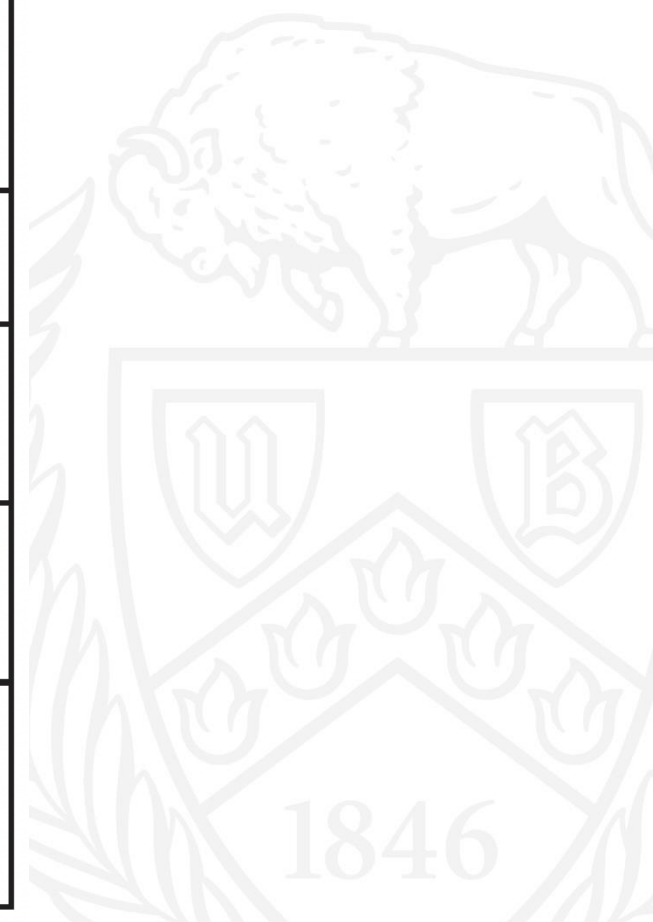
Plain Language

Advertising





Table C7. CTSI Recruitment Toolkit
Study listings <ul style="list-style-type: none">• Participate in Research Portal• ClinicalTrials.gov
Participant Databases <ul style="list-style-type: none">• Buffalo Research Registry• ResearchMatch.org• Clinical Data Repository (EHR data from region) (D1A.2, D3.2)• Emergency Medicine Research Assistant Program
Consultations <ul style="list-style-type: none">• Recruitment consults• Community Engagement consults
Study Resources <ul style="list-style-type: none">• Pre-paid debit cards for participants• REDCap• Trial Innovation Network
Plain Language <ul style="list-style-type: none">• Templates• Readability tip sheet• Consults
Advertising <ul style="list-style-type: none">• Flyer templates• UB branding materials• Social media advertising• Images and photo database



Participate in Research

Search and volunteer to participate in these available studies at UB. Your participation in research doesn't just benefit you, it helps advance healthcare for our entire community.

Be an Informed Participant

Highlighted Searches

Healthy Volunteer

COVID-19 and
Infectious Diseases

Virtual / Remote

Mental & Behavioral
Health

Diet / Obesity / Weight
Loss

Eye / Ophthalmology

Lung & Respiratory
Health

Show More

Search Clinical Trials

Filter on any fields below

Keyword ?

i.e. asthma

Age Group

Any

Additional Eligibility
Criteria

Click to select

Compensated Studies



Healthy Volunteers

Search

Reset

Showing Active Clinical Trials

← Prev 1 2 3 4 **5** 6 7 8 9 10 Next →

CONCUSSION STUDY FOR YOUNG ADULTS

Description:

The University at Buffalo (UB) Department of Rehabilitation Sciences is looking for young adults between the ages of 10 to 21 years old for an in-person study. The goal of the study is to learn more about how the brain may change after concussion in young adults. [Read More](#)

Eligibility:

Young adults between the ages of 10 to 21 years old Have never had a concussion OR have had a concussion Fluent in English

Contact(s)

Ghazala Saleem
ghazalas@buffalo.edu
+1 716-829-2589

[Learn More](#)



Table C7. CTSI Recruitment Toolkit

Study listings

- Participate in Research Portal
- ClinicalTrials.gov

Participant Databases

- Buffalo Research Registry
- ResearchMatch.org
- Clinical Data Repository (EHR data from region) (D1A.2, D3.2)
- Emergency Medicine Research Assistant Program

Consultations

- Recruitment consults
- Community Engagement consults

Study Resources

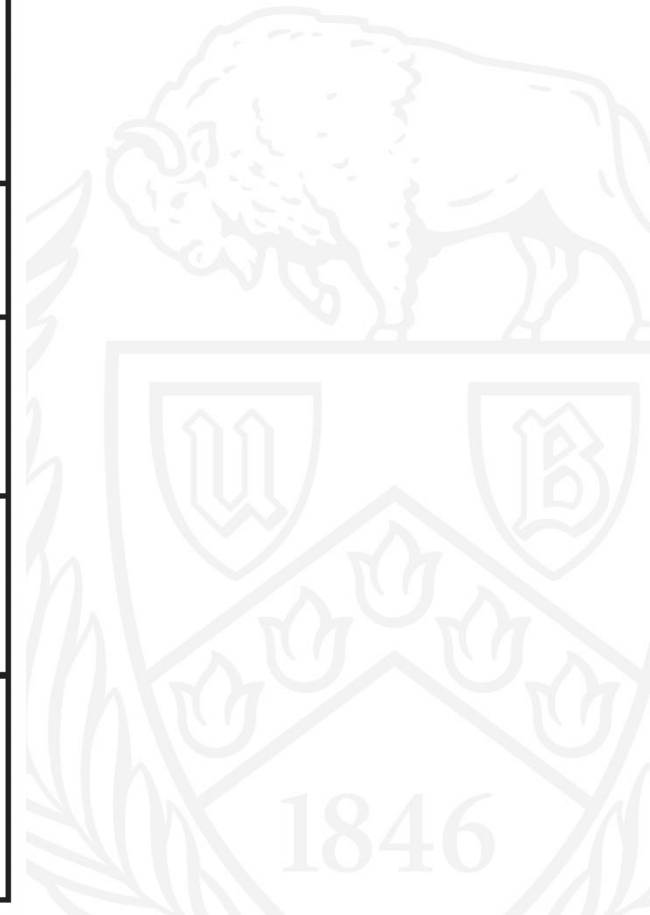
- Pre-paid debit cards for participants
- REDCap
- Trial Innovation Network

Plain Language

- Templates
- Readability tip sheet
- Consults

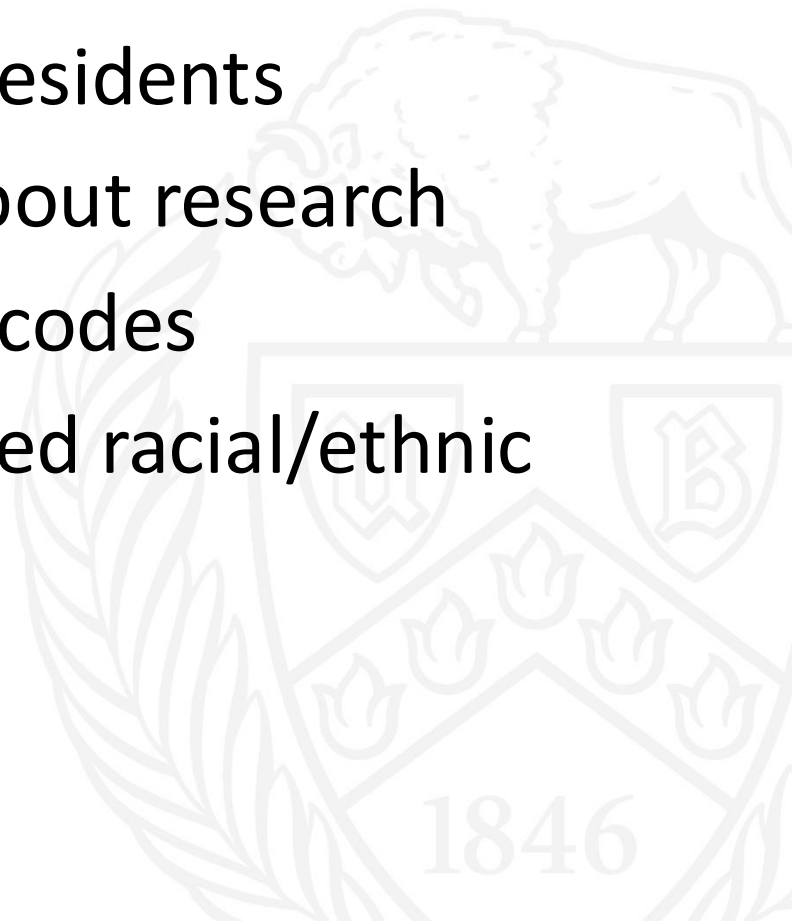
Advertising

- Flyer templates
- UB branding materials
- Social media advertising
- Images and photo database



Buffalo Research Registry

- Database of ~7,000 local residents
- Agreed to be contacted about research
- 51% from low income ZIP codes
- 46% from underrepresented racial/ethnic populations



Erie County Health Indicators

Health Indicator	White	Black	Asian	Latinx
% premature deaths (<75 years)	37%	63%	53%	68%
Heart disease mortality per 100,000	158	209	82	142
Stroke mortality per 100,000	33	57	23	38
Diabetes mortality per 100,000	20	60	18	38
Diabetes hospitalization per 100,000	12	47	5	24
Asthma hospitalization per 10,000 (age <17)	4	28	5	16
% Low birthweight births (2500 grams)	7%	14%	8%	10%
Infant mortality per 1000 live births	4	11	3	9

New York State Department of Health, County Health Indicators by Race/Ethnicity 2019-2021



UB Community Health Equity Research Institute

Mission:

Perform research to advance understanding of the root causes of health inequities and develop and test innovative solutions to eliminate health inequities in the region, with a focus on inequities experienced by African Americans.

Vision:

Wellness and social well-being will become a reality for all people in Buffalo, including people of color residing in underserved neighborhoods

Administrative Core

Aim 1:
Coordinate and manage
Center of Excellence

Aim 2:
Integrate cores to ensure
synergy and communication

Aim 3:
Track and evaluate
progress

Investigator Development Core

Aim 1:
Support community-
based pilot projects
by scholars

Aim 2:
DEIA action plan,
Diversify faculty

Aim 3:
Mentor and train
scholars



University at Buffalo

Community Health Equity Research Institute

NIMHD Center of Excellence
in Investigator Development
and Community Engagement

Community Engagement and Dissemination Core

Aim 1:
Work with scholars
to design CBPR
projects

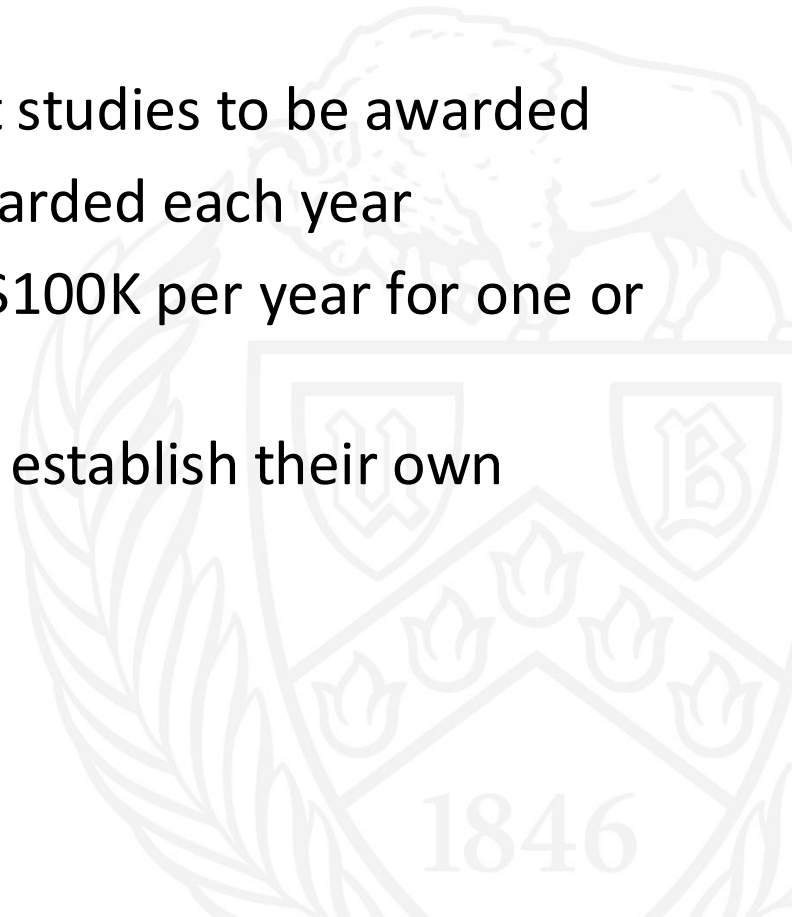
Aim 2:
Disseminate
results and work
for policy change

Aim 3:
Community Partner-
ship grants



Pilot Study Guidelines from RFA

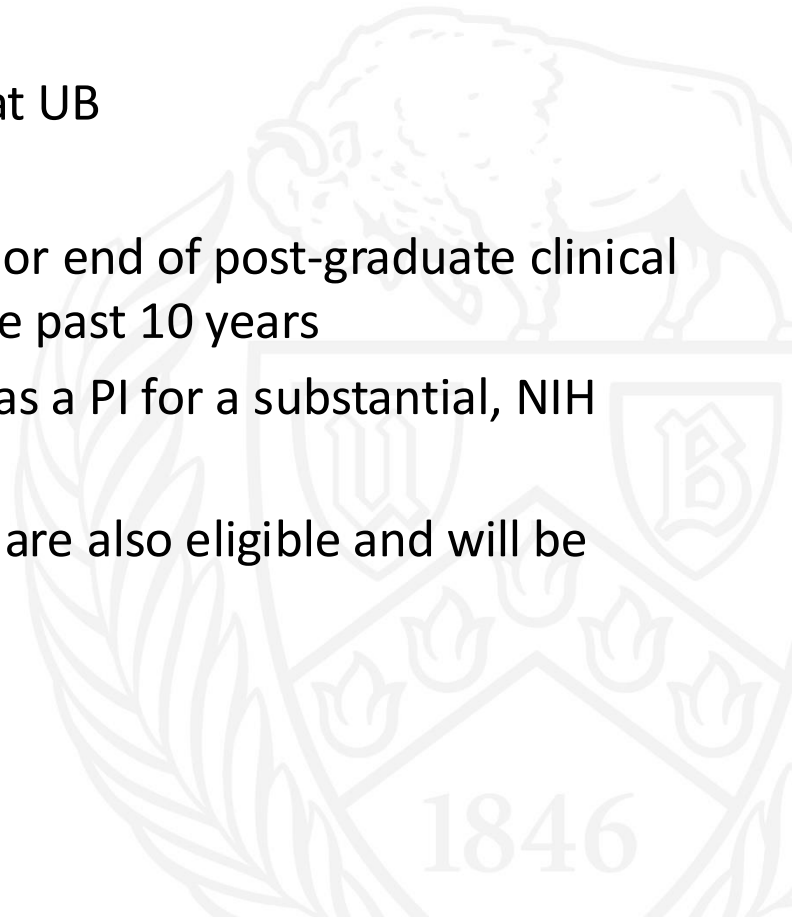
- Minimum of \$300,000 per year in pilot studies to be awarded
- Three to six new pilot studies to be awarded each year
 - Awards will be between \$50K and \$100K per year for one or two years
- Goal is to support new investigators to establish their own independent research programs





Eligibility Criteria to Apply for Pilot Studies

- Early-career investigators with appointments at UB
- NIH definition of early career investigator:
 - completed their terminal research degree or end of post-graduate clinical training (whichever date is later) within the past 10 years
 - has not previously competed successfully as a PI for a substantial, NIH independent research award
- Clinical and basic science postdoctoral fellows are also eligible and will be encouraged to apply.





Timeline for Soliciting, Reviewing and Awarding Pilot Studies

Request for proposals released	August 28, 2024
Informational Session	September 16, 2024 at 10 AM
Letters of intent due	October 8, 2024
Invitations to successful applicants to submit full proposals	Third week of October, 2024
Presentation to Community Advisory Board	Third week in November, 2024
Full proposals due	November 22, 2024
Notification to applicants	Early-mid January 2025
Funding start date	February 1, 2025



Community Health Equity Pilot Study Guidelines

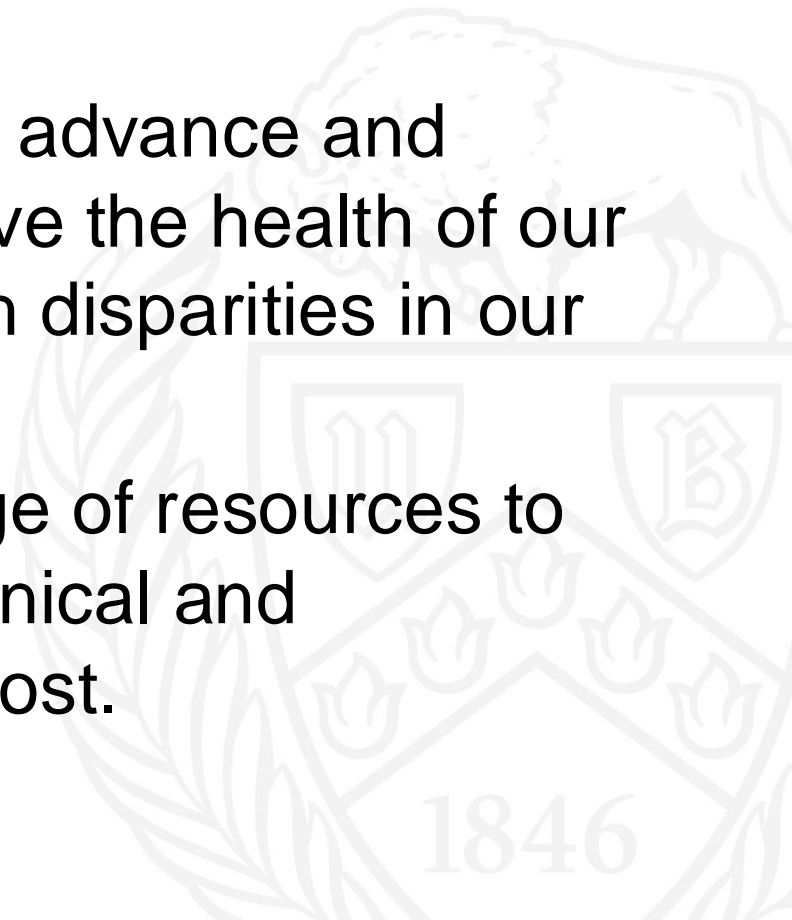
- Pilot studies grants must be projects to support research in health equity and adverse social determinants of health in our community.
- Three key requirements: The project must:
 - Address root causes of health inequities
 - Include a community partner
 - Lead to larger extramural funding

<https://www.buffalo.edu/content/dam/www/ctsi/Cores/PilotStudies/P50%20Health%20Equity%20Pilot%20Studies%20RFA%20Fall%202024.pdf>

1846

Summary

- Our community experiences profound health inequities.
- The mission of the CTSI is to advance and accelerate research to improve the health of our community and reduce health disparities in our community and the nation.
- The CTSI offers a broad range of resources to research teams to support clinical and translational research at no cost.





Summary 2

- A broad reaching partnership that includes community, university and government is working to eliminate health inequities.
- The Community Health Equity Research Institute is offering early career faculty and postdocs \$50K to \$100K pilot studies for health disparities projects.
- You are invited to attend the Seventh Annual Igniting Hope Conference:
 - “Building an Environmentally Just Community”
 - Saturday, September 21, 2024 8 AM to 3:30 PM
 - M&T Auditorium, Jacobs School